

## What is stormwater?

Stormwater is water from rain or melting snow that does not soak into the ground but runs off into waterways. It flows from rooftops, over paved areas and bare soil, and over lawns while picking up a variety of contaminants on its way. Polluted runoff degrades our lakes, rivers, wetlands and other waterways. Polluted stormwater can harm fish and wildlife populations, kill native vegetation, foul drinking water, and make recreational areas unsafe and unpleasant.

## Best Management Practices

BMPs, or Best Management Practices are ways in which we can get involved to reduce stormwater pollution and to manage stormwater runoff.

### Slow it down, Spread it out, Soak it in.

Get involved in conserving our water. Chemung County has clean water, but it is up to us to keep it that way! *Keep our clean waters, clean!*

Find out more at:

<http://www.chemungstormwater.org>  
[www.facebook.com/chemungstormwater](http://www.facebook.com/chemungstormwater)

*Funding in part by New York State Environmental Protection Fund administered by the NYS Department of Environmental Conservation*

Photo Credits:

Chemung County Stormwater Coalition  
 Upper Susquehanna Coalition

## Stormwater and the Home



## Pollution Prevention

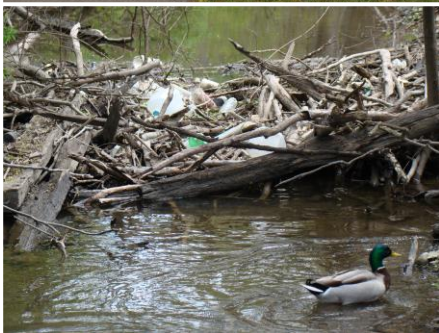


### Chemung County Stormwater Coalition

851 Chemung Street  
 Horseheads, NY, 14845  
 Phone: 1.607.796.2216  
[www.chemungstormwater.org](http://www.chemungstormwater.org)  
[www.facebook.com/chemungstormwater](http://www.facebook.com/chemungstormwater)

# IN YOUR BACKYARD

Water pollution is an important issue that everyone, in his or her own way, can help to minimize. By performing a few simple Best Management Practices, you can reduce your contribution to polluted stormwater runoff.



## Stormwater BMPs and Your Neighborhood

### Pet Waste

It is important that we pick up after our pets. If we leave their waste, it will enter into the nearest storm drain with the next rainfall, polluting our waters.

### Litter

Litter on sidewalks and roadsides poses a problem for stormwater as well. It can be carried into a storm drain, which then leads to local rivers and lakes. The litter you see on the side of the road affects all kinds of wildlife. If you see litter – pick it up! One plastic jug can take a million years to decompose.

### Car Washing

One of the most common sources of stormwater pollution is the wash water that enters the storm drain after washing your car. Taking it to the car wash is the best BMP, but if you choose to wash it at home, wash your car on the lawn instead of impervious surfaces like the driveway. Then, the water can soak into the lawn and will not flow down the driveway and into the nearest storm drain. Will it hurt the lawn? No!